



**LIVE HERE
GIVE HERE**



HAWKE'S BAY
FOUNDATION

2022 Annual Report

*Cornerstone donor Craig Hickson digs in and lends
a helping hand to the next generation to mark
Hawke's Bay Foundation's 10 Year Celebrations.
Image courtesy of Richard Brimer*



“You can’t stop trees growing as long as it rains, and it’s probably nicely symbolic because I don’t think you can now stop the Foundation from growing.”

- Cornerstone donor, James Williams

A Message From Our Chair

Kia ora koutou,

I’m writing this in the aftermath of Cyclone Gabrielle barrelling its way through Hawke’s Bay. It’s a good time to reflect on the need of charities in our region – both the immediate need and the need to build longer term resilience.

Looking back on 2022 in the context of this need, Hawke’s Bay Foundation has continued to build its potential for the region. We marked our 10 years in existence in 2022 reflecting on the role of community and the action that pulling together as a collective force has never been more critical. Looking out for your neighbour, helping our most vulnerable and lending support – be it financial, tangible resource or simply, time. None of it should be undervalued. We also saw this with a record volume of applications for our annual Funding Round.



Giles Pearson
Chair

Although we didn’t match the huge growth in our Endowment Fund during 2022 that we saw in 2021 (due in large part to a couple of very significant donations), we did record substantial additions to the fund, in particular through partnering with community organisations who want to develop their own fund within Hawke’s Bay Foundation. We weathered the financial markets downturn well, and although we recorded our first loss in the fund, it was not substantial.

Thank you to all our donors. You are the heart of the Foundation, and we thank you for entrusting your giving to us. Your generosity helps the hard working charities in Hawke’s Bay to provide the best services they can. Our own team keep setting the bar higher every year and 2022 was no exception – you are awesome – extending our reach but staying on message.



Amy Bowkett
Executive Officer

2022 In Review

FEBRUARY-APRIL: **Trustee Rotation**

We said farewell to long-serving Trustees Jessica O’Sullivan and Sam Howard and welcomed three new Trustees to the Board. Kara Biggs brings marketing and communications expertise to the table and Kate Tokeley has strong governance experience with a law background. James Wright’s background in finance equips him well in his role chairing our Investment Committee.

MARCH: **New Corporate Sponsor**

We welcomed StockCo as a new corporate sponsor, helping us bolster our operating fund. StockCo has provided livestock financing solutions for nearly 30 years in New Zealand and is based in Havelock North. Thank you to Jeremy Cranswick and Marcus Kight for partnering with us.

APRIL: **New Office Staff**

Vanessa Bousfield joined the Hawke’s Bay Foundation team as our new Administration and Distributions Officer. Vanessa has a marketing and IT background and lives in Havelock North with her young family.

OCTOBER: **New Sports Award Launched**

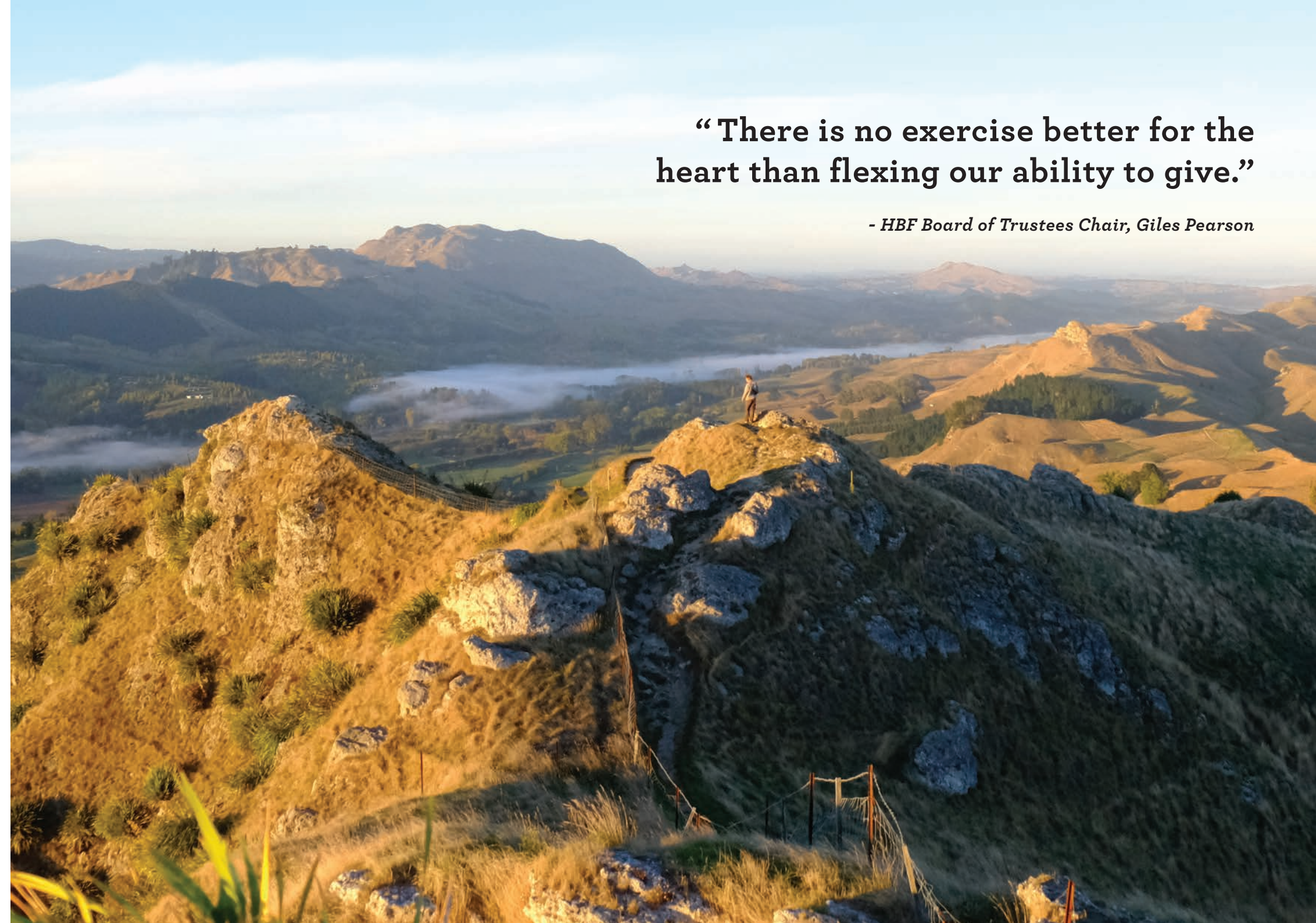
An exciting new fund supporting emerging young athletes has been inaugurated as a prize at the Sport Hawke’s Bay Awards. Keen sportswoman Rachael Knight enjoys backing talented local athletes with her patronage and through this award can now ensure this support in perpetuity.

NOVEMBER: **Hawke’s Bay Foundation Celebrates Milestone**

We turned 10! To celebrate the Foundation’s building blocks we put down roots by planting a grove of native trees at Te Mata Park with a group of our cornerstone donors. It was an opportunity to reflect on those who worked so hard to get Hawke’s Bay Foundation to the stage that it is today. Thank you to all past Trustees, committee members, staff and supporters who believed it could be done.

“There is no exercise better for the heart than flexing our ability to give.”

- HBF Board of Trustees Chair, Giles Pearson



Cornerstone Donors Muck In to Mark Foundation Milestone



Mucking in to mark the milestone, a group of Hawke's Bay Foundation cornerstone donor families, from left to right: Annabel Murphy and children Tillie (8) and Marco (3), James Williams, Tim and Jules Nowell-Usticke, Craig Hickson and wife Penny with daughter Anna Ducker and granddaughter Greer and pictured far right, Lyn Williams. Image courtesy of Richard Brimer.

Live Here, Give Here

A group of cornerstone donors took part in an historic tree planting at Te Mata Park to mark 10 years of the Hawke's Bay Foundation.

The group have created a commemorative woodland area at the park for Hawke's Bay Foundation to add trees to with every decade.

The concept has been a joint vision for Trustees and Te Mata Park Board Chairman Mike Devonshire.

"We see a great alignment with what the park stands for and the vision of Hawke's Bay Foundation. Projects such as this are nurturing the whenua but also show respect for our community. Many of the endeavours we seek to achieve, like the Foundation, are ultimately for the community so we're proud to stand beside it," says Mike.

Community-mindedness set the Foundation's wheels in motion ten years ago when ten Hawke's Bay cornerstone donor families agreed to start a fund to give back to the region they love, and inspire others to do the same.

In 2012 each family gifted \$100,000, kick-starting the Hawke's Bay Foundation Endowment Fund with a generous \$1M. Since then, through its unique investment model, the Foundation has been supporting local charities with long-term sustainable funding streams – in that time gifting \$2.85M to 352 local organisations.

Cornerstone donor James Williams was only too happy to roll up his sleeves to mark the 10 Year milestone

and says the energy of the early beginners now means Hawke's Bay has its own robust vehicle to sustain the work of local charities.

"You can't stop trees growing as long as it rains, and it's probably nicely symbolic because I don't think you can now stop the Foundation from growing. Te Mata Park and trees are a significant part of the landscape for Hawke's Bay and I think the Foundation will become an equally important part of lives for a lot of people.

"It's a great thing to support and will become more pertinent as time goes by and the Foundation grows. It's a magnificent thing to have been involved with and Hawke's Bay will benefit for generations to come."

Fellow cornerstone donor Craig Hickson acknowledges why he wanted to give back to the region 'that's been very good to him'.

"It doesn't seem like 10 years - that time has gone very quickly, and I'm pleased to be part of initiatives aimed at improving amenities for future generations."

Hickson took his granddaughter to the planting, and said it was a wonderful thing to add to their forefathers' efforts with her hand on the spade.

Outgoing Trustee and Chairman of Hawke's Bay Foundation's Investment Committee, Sam Howard, says the model is built for longevity.

Howard explained that every year, as more Hawke's Bay people give to the Foundation and as the

endowment capital generates investment returns, the fund continues to grow, both in terms of size, and more importantly, impact.

"The Foundation is a Hawke's Bay community asset we can all feel proud of and [feel] a sense of ownership in," Sam said.

2022 support for local charities through Hawke's Bay Foundation funding saw almost a quarter of a million dollars go out to 49 local charities spanning the region's service sector.

Distributions chairwoman Sarah Mulcahy said with demand for financial support reaching record levels, offering grants that increase yearly as the fund grows is a key point of difference.

Mulcahy became involved two years after the Foundation's inception and remembers just dreaming of what was possible. Now, it's coming to fruition.

"It is incredibly humbling to have the support of the Hawke's Bay community in what we are doing.

"And it's going to be great; this is a perpetuity organisation that will be here for the next 2-300 years, and it's fantastic to be part of it."

Hawke's Bay Foundation receives gifts and bequests, large and small, from individuals, families, community trusts and businesses. These are invested, protected, and never touched with the income earned used to support local charities year after year, with long-term sustainable funding streams. ♥

Live Here, Give Here

GIVE HERE
Scholarship Launched for
Women Working the Land

There aren't many places in the world Alison Bevin hasn't seen or been. Ten years spent living on the largest private residential ship on the planet will do that, but reflecting on her experiences visiting some of the most 'off-the-beaten track' wonders of the world has seen Alison return to the adage "charity begins at home."

As a result of the pandemic and forced to 'drop anchor' back home in New Zealand, Alison started thinking about her philanthropic wishes. Inspired by the story of Napier couple Diana and Colin Crombie who've been offering tertiary scholarships to local students, Alison decided she too would launch her own scholarship fund through Hawke's Bay Foundation.

Launched in 2022, the Alison Bevin Scholarship Fund provides an annual scholarship for one local female student to attend Lincoln University to study agriculture, horticulture and viticulture. Through Hawke's Bay Foundation, Alison has seeded the fund with \$100,000 and hopes that in time it will grow to \$1 million with students fully funded to Bachelor level.

"I've always had a strong interest in education and an urge to one day help open the doors for females in less traditional female roles. Hawke's Bay was built on



old fashioned farming and orcharding practices, and sits among the best producers in the world for making great wine. There are amazing career paths available here in the areas of agriculture, horticulture and viticulture for young women and they can be every bit as successful as males.

"I chose Lincoln because it remains New Zealand's specialist agriculturally based university - not to mention my great uncle taught there pioneering the Land Girl Programme at the beginning of World War 2."

Alison says it was his legacy equipping women with the skills necessary to run the land when their men had been sent off to war, that has inspired her, in her own way, to continue his vision.

"Hawke's Bay Foundation is building a community asset for the region for perpetuity, it's not top heavy on administration, I like how you can direct exactly where you want your gift to go and history is showing the funding model works." ♥



Ruurd and Anya Van Etten

GIVE HERE
Couple's Gift to Adopted
Hawke's Bay Community

Leaving a gift in their will to Hawke's Bay Foundation is enabling a Dutch couple who now call Hawke's Bay 'home', to give back to their adopted community. Since relocating here from the Netherlands six years ago, Anya and Ruurd Van Etten wanted to repay the warmth and support the region has extended them.

The couple have chosen to leave a gift in their will through community giving vehicle Hawke's Bay Foundation to support the organisations and causes they care about, in perpetuity.

"I like the idea of us leaving a gift to Hawke's Bay Foundation in our will and using our money for good because we believe money should always be a tool to do better in the world. Ruurd and I like the concept of Hawke's Bay Foundation using our gift to generate not just one-off but continued support for local organisations. It's not like other charitable giving where once your money is spent it's gone, the Foundation grows your gift into an ongoing income stream. It's a very good business model in terms of continuity.

"We are also impressed by the diversity of the Foundation's beneficiaries. These focus areas are important because they are the core of the community, therefore we feel confident our gift will always assist a project we would fully support."

Born in New Zealand but growing up in Europe to

Dutch parents, Anya had always heard stories about the beauty of New Zealand and the kindness of its people. She says the reality of living here has opened her eyes.

"We had no idea there was another side to New Zealand, where people are struggling and feeling isolated, growing up without healthy meals, even without a home.

"I think we have, as a community, an obligation to care and to support, because that's what people are supposed to do, take care of each other."

Through their giving with Hawke's Bay Foundation, Anya and Ruurd have set up a \$365 a year giving model, that they both save into and gift the Foundation's General Fund. Anya recalls it was something her mother taught her and her sister to do when they were growing up, saying "it's not much, but imagine if everyone did this."

As well as their 'living giving' Anya and Ruurd have also left a gift in their memorandum of wishes to Hawke's Bay Foundation to steward their support into areas that hold special meaning to them, after they've gone. Improving children's quality of life and charities that promote positive health outcomes hold key priority for the couple.

Anya and Ruurd don't want any special recognition for their giving and say they're just 'everyday people trying to bring a bit more joy to the world.'

"We are very grateful and happy to be in Hawke's Bay, we consider ourselves very lucky. We've met wonderful people and everyone has been so welcoming, so a gift to Hawke's Bay Foundation is also a 'thank you' to the Hawke's Bay community." ♥



Alison Bevin

Live Here, Give Here

GIVE HERE
Hawke’s Bay Foundation
Supports New Sports Award

2022 saw Hawke’s Bay Foundation proud to support the inaugural Rachael Knight Emerging Sportsperson of the Year Award.

The award’s first ever recipient, Hannah Hunt was a key member at the 2022 World Championships in France where the U21 team beat defending champs Germany.



Hannah studies at EIT but plans to use Rachael’s financial support towards her canoe polo training camps where she’ll target another tilt at the Worlds in China in two years’ time.

“It’s amazing, I didn’t think there was a chance of me winning tonight, but it’s so cool to have someone like Rachael backing youth in sports across Hawke’s Bay.”

For Rachael Knight, helping young athletes like Hannah reach the top of their sport is personally rewarding.

“I’ve been sponsoring young athletes for six years now and I know how hard they work, the costs associated and what sacrifices they have to make, that I thought it was time I recognised them in an annual award.”

“In New Zealand there’s not a lot of money available especially for up and coming athletes that haven’t reached the top to get national funding. In many cases their parents have given everything for these young athletes, so if I can help just a little bit, I’m pleased.”

By setting up a designated fund for the award through Hawke’s Bay Foundation, Rachael utilises the growing income from the fund as prize money for the award recipients. It means as the fund generates income in perpetuity, prize money for the award grows and Rachael’s legacy is remembered for years to come. ♥

If you’re interested in setting up a Sports Award to support local athletes, get in touch with Hawke’s Bay Foundation on (06) 870 4648.



Hannah Hunt with Rachael Knight

GIVE HERE
Foundations of Heritage
‘Key’ to Giving

Hawke’s Bay duo Neil Barber and Craig Hay have always been attracted to solid foundations restoring some of the region’s most iconic heritage listed buildings. Now through a bequest in their will to Hawke’s Bay Foundation, they plan to leave their most enduring legacy yet.

Hawke’s Bay Foundation is the pair’s chosen charitable giving vehicle to support arts, heritage and culture in perpetuity as the areas of interest closest to their hearts. Neil knows the money they leave will keep on having tangible impact for generations to come.

“I like the concept of capital being protected and only the income derived being used for distribution. For this reason the Hawke’s Bay Foundation model works for me alongside the fact my partner Craig sits as a trustee on the Foundation Board. Both he and I have observed this organisation since its inception and the progress that has been made, watching it go from strength to strength,” says Neil.

Whilst not originally from Hawke’s Bay, Neil and Craig have lived here for twenty plus years and both agree it feels ‘very much like home.’ An award winning track record restoring and renovating Napier’s Art Deco Masonic Hotel along with colonial rural homestead, Greenhill are testament to how invested the pair are in progressing the region.

Now nearing retirement age, Neil says their estate planning has become a recurring topic of conversation and a priority. “It’s a bit cliché but time marches on. We have more and more friends who are experiencing health events and you just never know.

For us we need certainty that the areas that hold special meaning to us will keep on being supported, long after we’ve gone.

“We have a family trust company. As part of setting that up we have the ability to select a charitable organisation within New Zealand to be a beneficiary and Hawke’s Bay Foundation neatly fits this criteria.”

Neil says knowing the areas you want to support have been a driving incentive.

“We’re avid art collectors and passionate arts, heritage and culture enthusiasts so giving what we can to help this flourish is key to us and we’d like to think that’s been evident in our life’s work so far.”

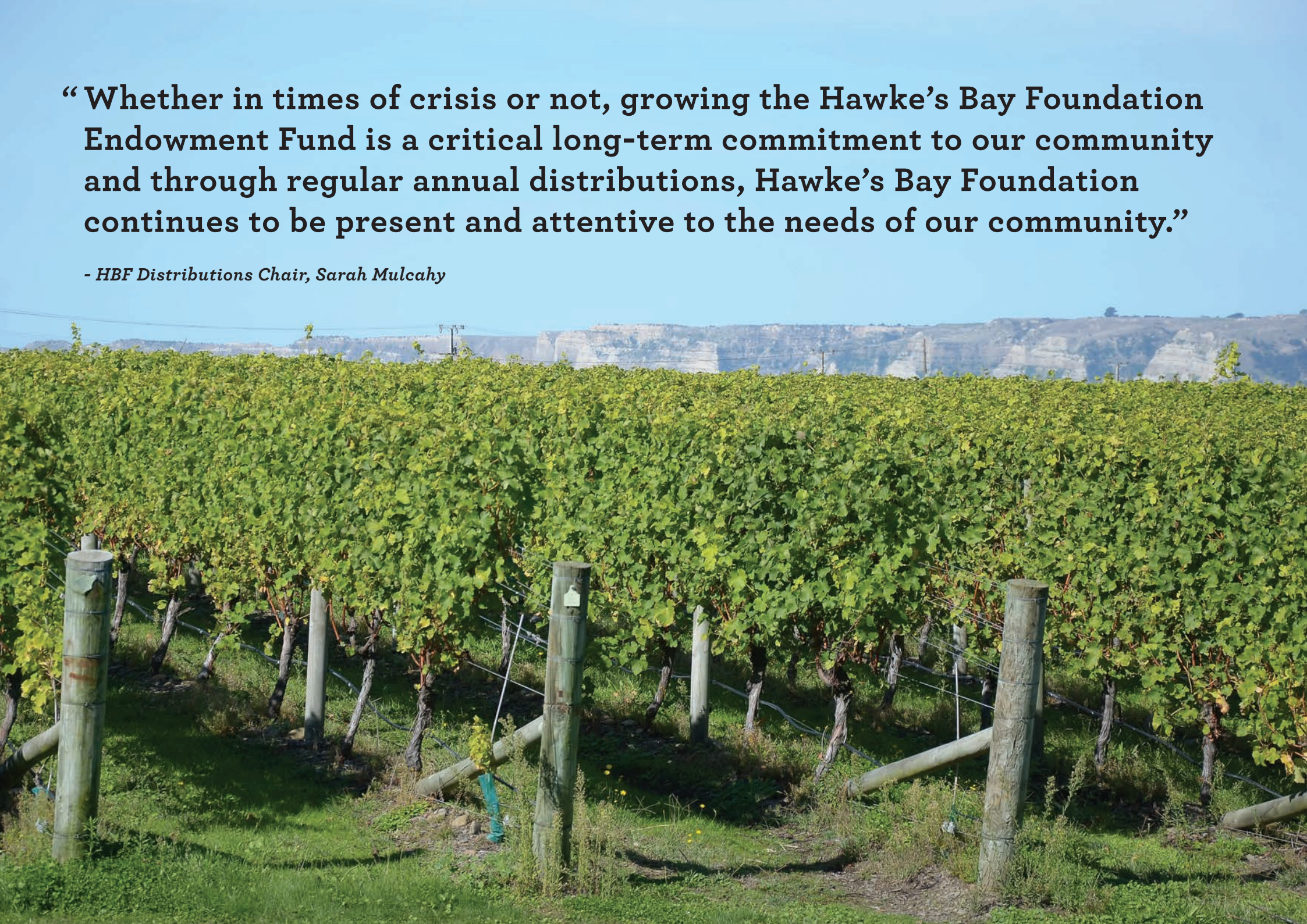
Neil says at the end of the day, contemplating the legacy he and Craig would like to leave on the world has become clear cut.

“Whilst it is nice to make some provision for family members we have always felt that receipt of a bequest should not be life changing and that it’s important to make one’s own way in life, not sit back in anticipation of an inheritance. Talking to your professional advisor about your philanthropic wishes can help the community that’s been good to you, and we feel very content Hawke’s Bay will benefit from ours.” ♥



Neil Barber and Craig Hay

“We’re avid art collectors and passionate arts, heritage and culture enthusiasts so giving what we can to help this flourish is key to us.”



“Whether in times of crisis or not, growing the Hawke’s Bay Foundation Endowment Fund is a critical long-term commitment to our community and through regular annual distributions, Hawke’s Bay Foundation continues to be present and attentive to the needs of our community.”

- HBF Distributions Chair, Sarah Mulcahy

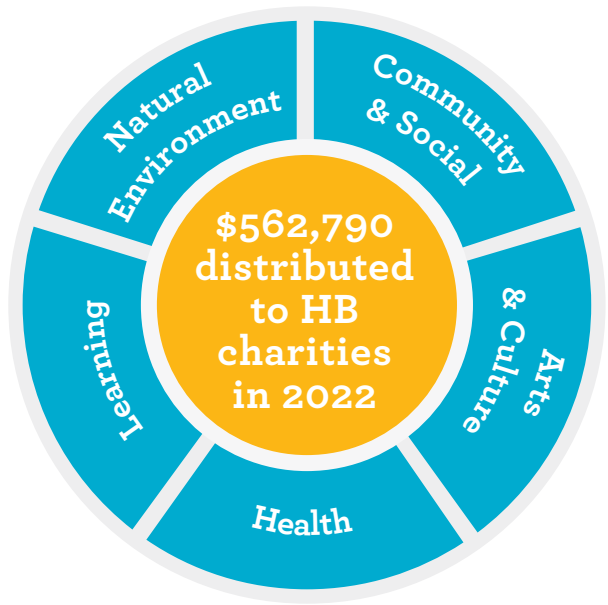
Statement
of Performance

Hawke’s Bay Foundation	2022
Net assets (as at 1 Jan 2022)	\$6,530,177
Donations received (incl pass through)	\$686,742
Total distributions made (incl pass through)	\$562,790
Return on investments	-3.44%
Net assets (as at 31 Dec 2022)	\$6,419,300

Hawke's Bay Foundation uses 1% of the Endowment Fund for operational costs with the balance of operations funding derived from donations and sponsorship. All funds were invested in compliance with our SIPO which can be viewed on our website.

Hawke’s Bay Foundation’s Endowment Fund has remained static at around \$6.2 million throughout the financial year ended 31 December 2022. This includes a combination of donations received, a record level of distributions made, and a loss of 3.44% (\$217,000) on the Foundation’s investment portfolio.

In 2022 the Foundation recorded its first year of negative returns on its investments but sits contextually against a backdrop of the worst year in more than a decade for global investment markets.



While negative returns must be expected from time to time, they will not invalidate the maintenance of the Foundation’s long term capital objectives and its distribution policy.

Achieving an average annual return on investments of 6.99% over the last five years demonstrates the stability and growth of the Foundation’s Endowment Fund which enables it to give back to the community every year. Record distributions in 2022 made a significant impact on essential charities and services throughout Hawke’s Bay.

Look how far we’ve
come since 2012

\$2.85 million

Gifted to the community
(includes pass-through donations)

\$6.42 million

Total Endowment Funds

352

Charities supported

Distributions

Through 2022’s Annual Funding Round, Hawke’s Bay Foundation distributed \$232,551 into our local community. We received 93 applications for funding, and we were able to provide funding to just over half of those. Funding decisions are always difficult and in 2022 the number of funding requests continued to be substantially above the available funds. As a funder we try to prioritise our distributions to where it will make the greatest impact, understanding that each local community has different needs and aspirations. In making distribution decisions our specialist Distributions Committee understands the requirement to balance the gaps in social support against the things that ensure communities are thriving, such as the arts and climate initiatives. The average funding for each organisation from our general fund was \$3,784 and even with relatively small sums of money, our grassroot organisations can extend the reach of their work.

In 2022 we were able to grow the funds available from donor directed sources, where donors have accumulated named funds in the endowment or where Hawke’s Bay Foundation holds funds for scholarships.

To support decision making, the Foundation sets funding priorities which we review each year, with the Distributions Committee working diligently to consider every application on its merits against the level of need, equity and the available funds. We continue to work closely with The Tindall Foundation and are proud to distribute funding into the community on their behalf.

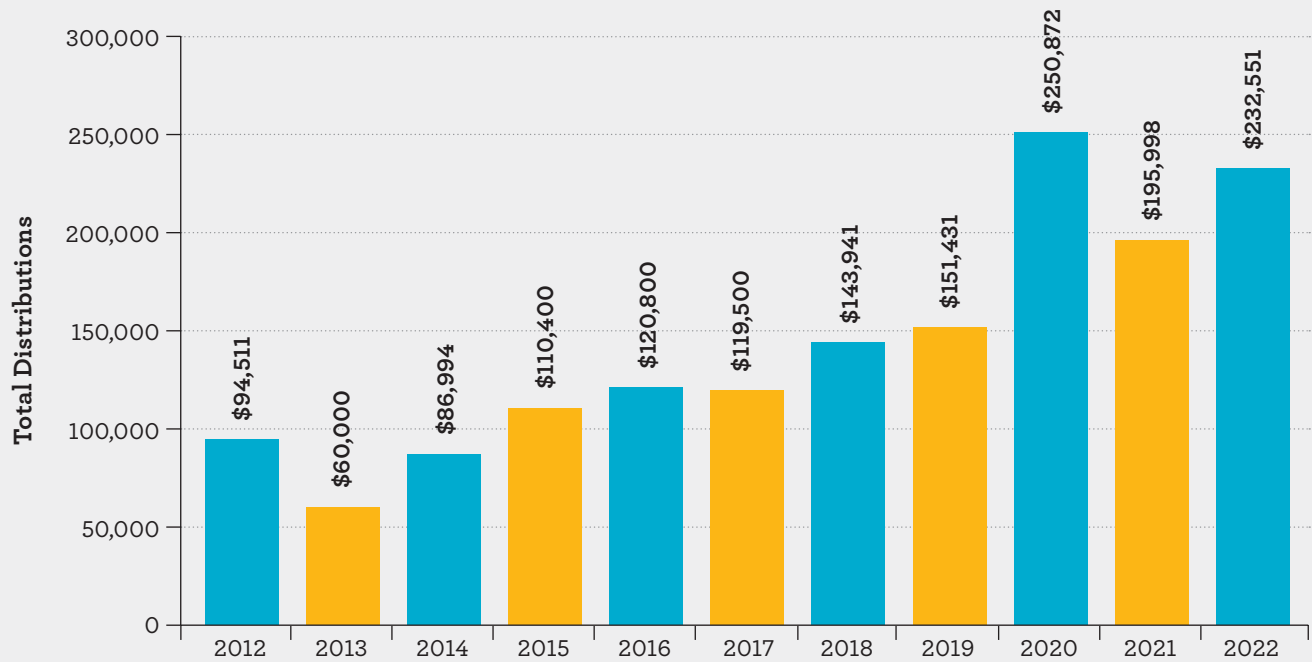
At the time of writing this Annual Report we are in the midst of the response and recovery from the devastation of cyclone Gabrielle. While the full, long-term impacts are yet to be understood, the Hawke’s Bay Foundation Cyclone Relief Fund has once again shown the generosity of our community to take action in our time of need. Whether in times of crisis or not, growing the Hawke’s Bay Foundation Endowment Fund is a critical long-term commitment to our community and through regular annual distributions, Hawke’s Bay Foundation continues to be present and attentive to the needs of our community.



Sarah Mulcahy

Chair, Distributions Committee

Hawke’s Bay Foundation Funding Round Distributions 2012-2022



2022 Grant Recipients

Hawke’s Bay Foundation & Tindall Foundation Grants	GRANT (NZD)
Age Concern Hawke's Bay ^{HB} F	4,000
Age Concern Wairoa ^{HB} F	5,000
Anxiety NZ ^{HB} F	1,500
Arts Inc. Heretaunga ^{HB} F	2,000
Awhi Charitable Trust ^T	5,000
Big Brothers Big Sisters of Hawke's Bay ^T	7,920
Birthright HB Child and Family Care Trust ^T	6,000
Brain Injury Association HB ^{HB} F	4,088
Cancer Society of NZ Hawke’s Bay ^{HB} F	5,000
Central Connect Whare Manaaki ^T	5,000
CHB Parents Centre ^T	3,000
Christian Lovelink ^{HB} F	4,000
Citizens Advice Bureau Napier ^T	5,000
CONNECT Youth & Community Trust ^T	2,000
Cranford Hospice ^(Tagged Funds)	7,000
Creative Arts Napier Inc ^{HB} F	2,000
English Language Partners Hawke's Bay ^T	2,000
Epic Ministries ^(Tagged Funds)	4,584
Family Violence Intervention and Prevention ^T	5,000
Family Works Hawke's Bay ^{HB} F	6,000
Food Basket CHB ^{HB} F	2,000
Graeme Dingle Foundation Hawke's Bay ^T	2,092
Hastings Art & Culture Trust ^(Tagged Funds)	2,000
Hastings Citizens Advice Bureau ^T	4,000
Hastings Riding for the Disabled ^{HB} F	3,000

Connecting generous people that care with causes that matter

Hawke’s Bay Foundation & Tindall Foundation Grants	GRANT (NZD)
Hawke’s Bay Youth Trust (Giants Boxing) ^{HB} F	4,000
Heretaunga Women's Centre ^T	5,000
Hinemihi Marae, Wairoa ^T	3,000
Inspire in Education ^T	5,000
Lifelink/Samaritans ^{HB} F	2,000
Mates of Hawke's Bay Charitable Trust ^{HB} F	3,000
Napier Family Centre ^{HB} F	7,000
Napier Riding for the Disabled ^{HB} F	3,000
Nourished for Nil ^{HB} F	3,000
Orokohanga Music Trust ^{HB} F	5,000
Parent to Parent NZ ^{HB} F	2,000
People’s Advocacy Society ^{HB} F	5,000
Prima Volta Charitable Trust ^{HB} F	5,000
Radio Kidnappers Charitable Trust ^{HB} F	1,000
Re-Source ^{HB} F	3,000
Sustaining HB Trust / Environment Centre HB	2,000
Taihoa Marae ^T	5,000
Te Mata Park Trust ^{HB} F	1,000
The Paul Hunter Centre ^(Tagged Funds)	3,000
The Raukatauri Music Therapy Trust ^{HB} F	3,707
Thermals for Children ^{HB} F	2,000
Wairoa Community Development Trust ^{HB} F	2,500
Wharariki Trust ^{HB} F	7,000
Wrapped Charitable Trust ^{HB} F	1,200

^T denotes distributions made from The Tindall Foundation ^{HB}F Hawke’s Bay Foundation



“I think we have, as a community, an obligation to care and to support, because that’s what people are supposed to do, take care of each other.”

- HBF donors, Anya and Ruurd Van Etten

Partners & Supporters

As a community foundation we strive to keep our costs as low as possible to ensure 99% of the income from gifted funds is invested back into our community. We are incredibly grateful to the following organisations who have supported us to keep our operating and marketing costs to a minimum. We also want to thank all of the individuals who have given their time or expertise to assist with one-off events or promotions.

Hawke’s Bay Foundation is proudly supported by:



Community Foundations of New Zealand (CFNZ)



Hawke’s Bay Foundation is proud to be a member of Community Foundations of New Zealand (CFNZ). Membership of CFNZ means that our community foundation meets professional standards of best practice. We are community focussed and governed by a local board who continually strive to build a permanent endowment that will benefit our local community. We’re proud to be part of a network of community foundations that have been growing around Aotearoa New Zealand since 2003.

The Tindall Foundation (TTF)



Hawke’s Bay Foundation is proud to be the local funding manager for The Tindall Foundation (TTF). This unique funding model sees regional funding managers throughout New Zealand give out local donations on behalf of TTF. Applications received in our annual funding round are evaluated against TTF criteria and we work closely with them to ensure grants are awarded in line with their key programme areas. In 2022, we awarded grants totalling \$64,000 to 15 organisations on behalf of the Tindall Foundation.



Waitangi Park

Our Team

Board of Trustees

Hawke’s Bay Foundation Board consists of nine Trustees, all of whom bring a great deal of knowledge and experience from various sectors of the community.

Four of our trustees are nominated by leaders in the Hawke’s Bay community, including one nominated jointly by the mayors of Hastings and Napier; one by the Hawke’s Bay Law Society; one by Chartered Accountants Australia and New Zealand and another by the Hawke’s Bay Chamber of Commerce.



Giles Pearson (Chair)



James Wright



Sarah Mulcahy



Kara Biggs



Jules Nowell-Usticke



Craig Hay



Kevin Callinicos



Cam McLeay



Kate Tokeley

Committees

Finance and Risk Committee

Giles Pearson (Committee Chair)
Bev Penny
Kate Tokeley
Nigel Dawes

Investment Committee

James Wright (Committee Chair)
Henry Pennington (Community Representative)
Neil Martin (Community Representative)
Michael Chamberlain (Consultant)
Giles Pearson

Distributions Committee

Sarah Mulcahy (Committee Chair)
Gwyn John (Community Representative)
Trish Giddens (Community Representative)
Jules Nowell-Usticke
Craig Hay
Kevin Callinicos
Satyam Saha
Kathryn Young

Marketing Committee

Kara Biggs (Committee Chair)
Jules Nowell-Usticke
Craig Hay
Cam McLeay
Alisha Neilson

Executive Team

Amy Bowkett (Executive Officer)
Vanessa Bousfield (Administration and Distributions Officer)
Bev Penny (Finance Officer)
Alisha Neilson (Marketing and Communications Officer)

Outgoing Board members February 2022: Sam Howard (Investment Committee Chair) and Jessica O’Sullivan (Marketing Committee Chair)

“Giving is like the branch of a tree, because generosity grows and with a vehicle like Hawke’s Bay Foundation giving can be targeted and collective. I think that’s a legacy worth leaving.”

- HBF donor, Alison Bevin



Our community.

Our responsibility.

Our future.



HAWKE'S BAY
FOUNDATION

(06) 870 4648

info@hawkesbayfoundation.org.nz

www.hawkesbayfoundation.org.nz

 facebook.com/HawkesBayFoundation

 instagram.com/hawkesbayfoundation

 nz.linkedin.com/company/hawke-s-bay-foundation